

HEAVY DUTY FOLDING STEP

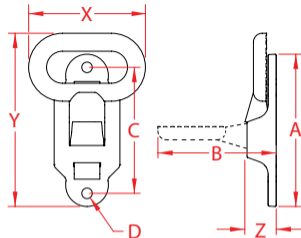
316 STAINLESS STEEL



Import



Precision
Cast



ITEM	A	B	C	D	FASTENER	X (height)	Y (length)	Z (width)	WT (lb)	PACKAGING TYPE	EACH (qty)	INNER (qty)	CARTON (qty)	UPC
S3630-0000	4.61"	3.90"	3.88"	0.33"	5/16" Screws	4.38"	5.55"	0.91"	1.21	POLYBAG	1	1	20	791506056546

NOTE:

**USE WHERE TEMPORARY STEP IS REQUIRED. FOLDS UP FLAT WHEN NOT IN USE AND HOLDS EITHER POSITION BY USE OF A LEAF SPRING.
ALL DIMENSIONS ARE NOMINAL (+/- 3%) AND ARE SUBJECT TO CHANGE WITHOUT NOTICE.**